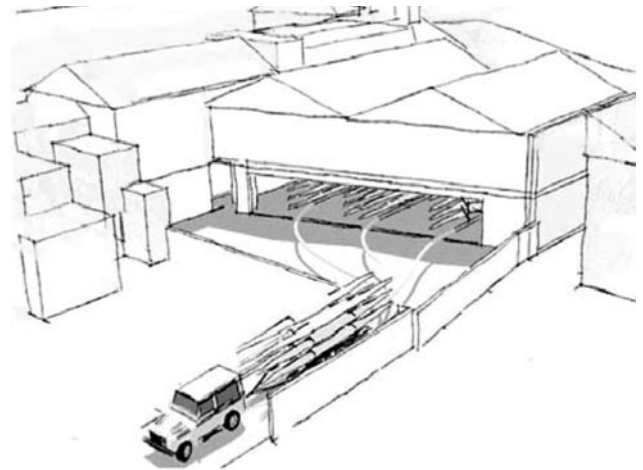


# Boathouse Design

---

Based in Clapham, South London, Tuke Manton is a medium-sized architectural practice offering a multidisciplinary design and consultancy service to rowing clubs, schools and colleges.

---



## Tuke Manton / Architects

As specialists in competition rowing boathouses, we have a unique set of skills and experience to add to your aspirations. Over the years, we have researched and found ways of adding value to boathouse projects, whether small alterations, refurbishments or new buildings.

Our qualified staff have decades of design and construction experience and we have what it takes to make your boathouse very special, including personal rowing experience!

Consultation with clients, users and other stakeholders is also something in which we excel. We share the processes at every stage to give everyone ownership of the solution and to ensure complete clarity is achieved in decision-making.

We know the other specialists required and have working relationships with manufacturers of the best racks and other components as well as contacts within the rowing world.

We are used to working on small, difficult sites with access problems and know about programming work to minimise disruption. We can also keep within tight budgets and help with your funding campaigns.

## What we can do

We can give your boathouse a whole new image, building on your strengths, achievements and heritage. And in addition, we can create a new inspiring environment which will instil pride, stimulate participation, increase membership and heighten local awareness.

We can give stakeholders pride in the outcome, through joint ownership of the process and design solutions, and give you a building which leaves a lasting impression on users and visitors.

We will always concentrate cost where it benefits the users and provides real value for money.

We create innovative solutions whilst using safe, tried and tested methods and materials. We also strive to reach new standards which will contribute to boathouse design in the future.



# Design

---

We can take your building from being mere accommodation to an environment synonymous with successful rowing.

---

## A psychological approach

We know the right atmosphere is important, and that social spaces are needed where spontaneous interaction can take place without interfering with the function of the building.

Crew, briefing, and meeting rooms need central and strategic positions where they can enjoy status and sanctity. We are aware of the mental journey – from changing facilities all the way to the event, taking in briefing, bonding and consciousness raising on the way. We know that it is a fundamental part of the psychology of competitive rowing.

We try hard to bring together the memorabilia, psychology, heritage and competitiveness at one point to focus on culture, effort and the promotion of success for your crews.



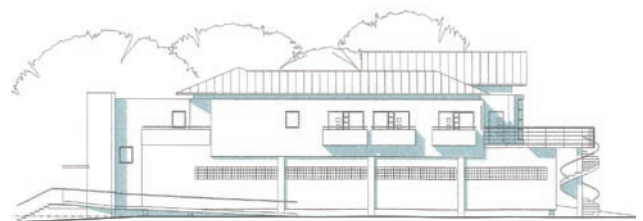
## Modern facilities

Fitness, training, changing and welfare facilities are as important as boat storage and meeting rooms. We feel training should be almost as enjoyable as rowing and needs to take place in well designed facilities which comply with modern Sport England standards.

We know how to use daylight, colour and ventilation to maximise image, atmosphere, performance and enjoyment. And we understand how well chosen materials, good services and reduced maintenance not only uplift the spirits of rowers but also add to the economic efficiency of your building.

In addition, good boat maintenance facilities with a good working environment, daylight, storage and office facilities, enhance the pride and self-esteem of all the users.

Quick, easy access to and from boat storage gives everyone involved the feeling of efficiency. The time saved is added directly to rowing and lifts the enthusiasm for more rowing time on the river.



# Development

---

Site development can be very important. Access problems, parking, storage, security, maintenance, standards and other issues affect efficiency and also vary from site to site.

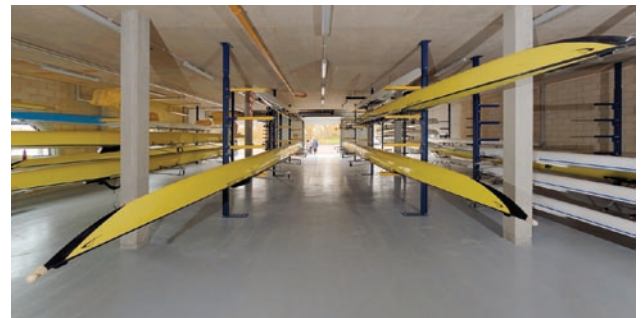
---

Boat clubs offer great locations for private functions but are often hampered by these problems. We can help with ideas and innovation to solve problems which you may have had for years.

We can look at issues which may be reducing revenue from hiring out facilities, boat storage, catering and refreshments. For example, a new boat racking system can store more boats in the same space and be easier to use. The cost is usually less than the cost of one boat and can be recovered in a year or two with extra revenue!

We can prepare feasibility studies for the reorganisation of the site. Access, manoeuvring boats and trailers, storage, parking and even flooding can be studied as well as appearance and other site issues.

Imagination is needed to solve problems and to use every opportunity to make sometimes unexpected improvements.



## Contact us

---



Please speak to Marilyn, Roger or Ian  
on **020 7627 8085** or email us at  
**rowing@tukemanton**

### **Tuke Manton Architects LLP**

20 Prescott Place, London SW4 6BT

T: 020 7627 8085 F: 020 7627 2658

E: [info@tukemanton.co.uk](mailto:info@tukemanton.co.uk)

[www.tukemanton.co.uk](http://www.tukemanton.co.uk)